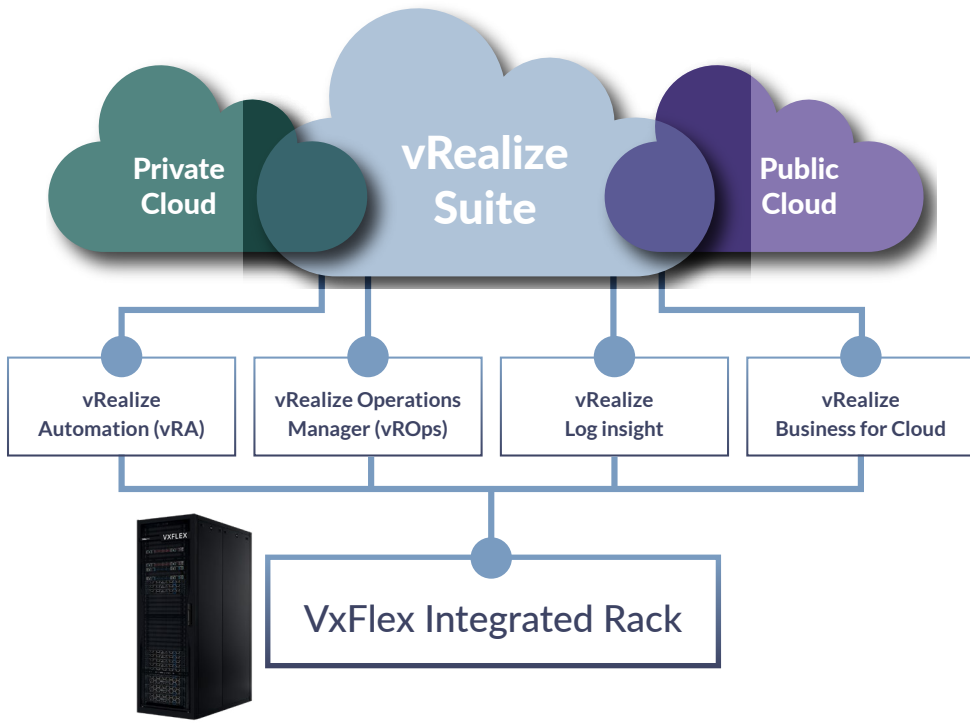


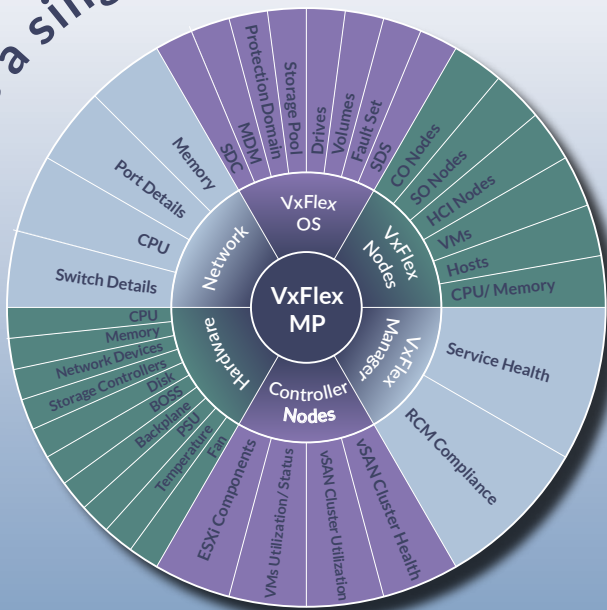
Integrated Monitoring and Alerting System DELL EMC VxFlex Integrated Rack



Monitoring Your Complex Hybrid Cloud Environment with:

- ✓ Built-in Intelligence
- ✓ Extensibility
- ✓ Dynamic Learning of Environment
- ✓ Smart Alerts, Charts, and Recommendations
- ✓ Capacity Analysis
- ✓ Public APIs

VxFlex Management Pack (MP) for vROps Achieve a single unified view of the entire environment



- NETWORK MONITORING**
- PERFORMANCE MONITORING**
- NODE MONITORING**
- STORAGE MONITORING**
- HARDWARE MONITORING**
- HISTORIC DATA ANALYSIS**

VxFlex MP Features

- ✓ Resource discovery
- ✓ Monitoring and alerting
- ✓ Badges: Health, Risk, and Efficiency
- ✓ Topology and Relationships
- ✓ Capacity Planning
- ✓ Dashboards

What vROps brings to the vRealize Suite

- ✓ Intelligence built into the dashboards with unlimited extensibility by using management packs
- ✓ Capacity analytics, to plan future projects
- ✓ Public APIs, to develop management packs with additional functionalities
- ✓ Smart alerts plus charts and metrics information to drill down the alerts and give recommendations
- ✓ Get performance issue-related alerts in multiple environments: public cloud, private cloud, hybrid cloud



© 2019 Cloud Evolutions, Inc. All trademarks are the property of their respective owners.
 Cloud Evolutions, DISCLAIMER OF WARRANTIES; LIMITATION OF LIABILITY: Cloud Evolutions, Inc. has made reasonable efforts to ensure the accuracy and validity of its testing, however, Cloud Evolutions, Inc. specifically disclaims any warranty, expressed or implied, relating to the test results and analysis, their accuracy, completeness or quality, including any implied warranty of fitness for any particular purpose. All persons or entities relying on the results of any testing do so at their own risk, and agree Cloud Evolutions, Inc., its employees and its subcontractors shall have no liability whatsoever from any claim of loss or damage on account of any alleged error or defect in any testing procedure or result. In no event shall Cloud Evolutions, Inc. be liable for indirect, special, incidental, or consequential damages in connection with its testing, even if advised of the possibility of such damages. In no event shall Cloud Evolutions, Inc.'s liability, including for direct damages, exceed the amounts paid in connection with Cloud Evolutions, Inc.'s testing. Customer's sole and exclusive remedies are as set forth herein.
 Testing conducted under laboratory conditions using synthetic benchmark tools, real-world performance may vary.